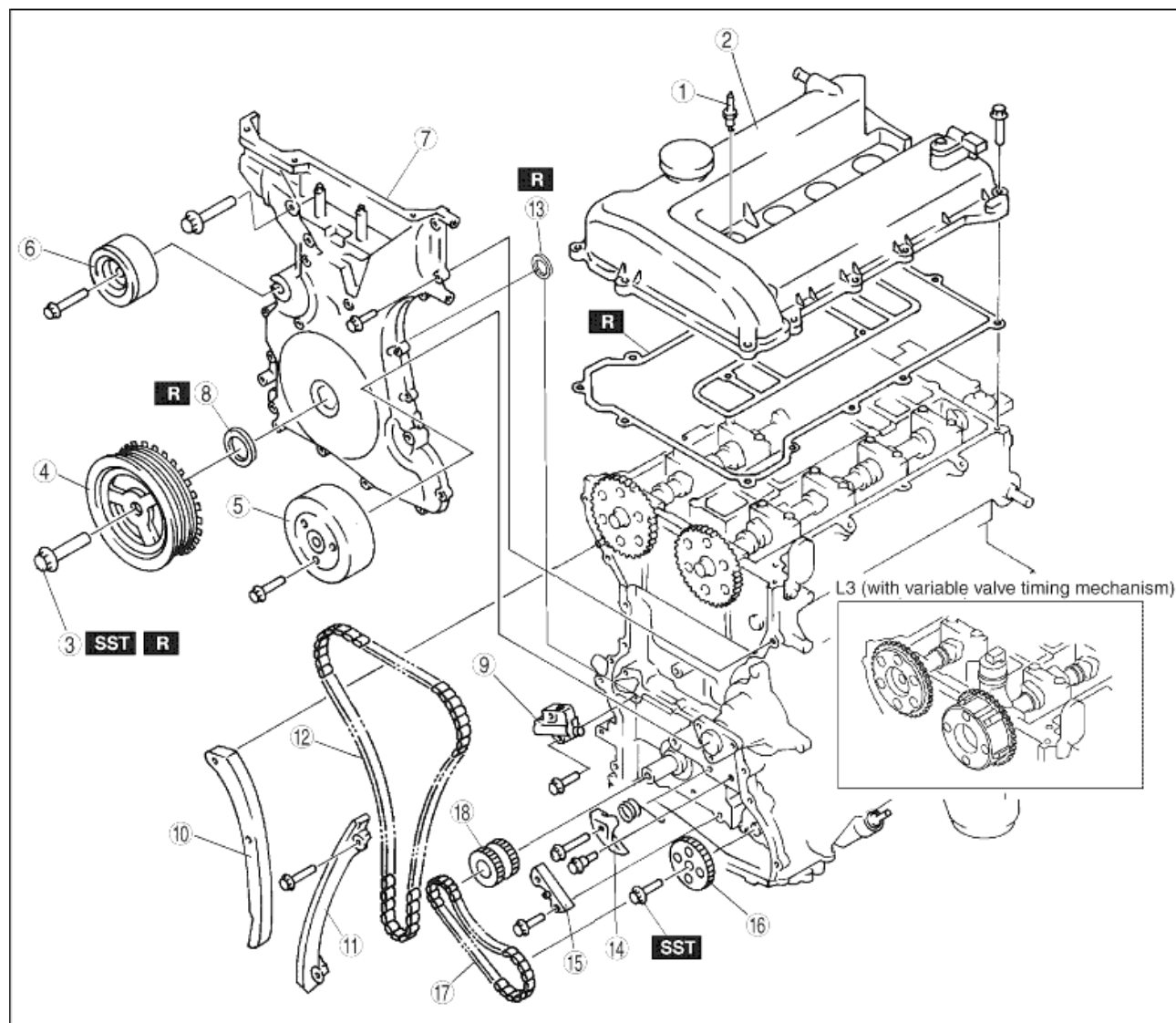


TIMING CHAIN DISASSEMBLY

A6E242402000E04

1. Disassemble in the order indicated in the table.



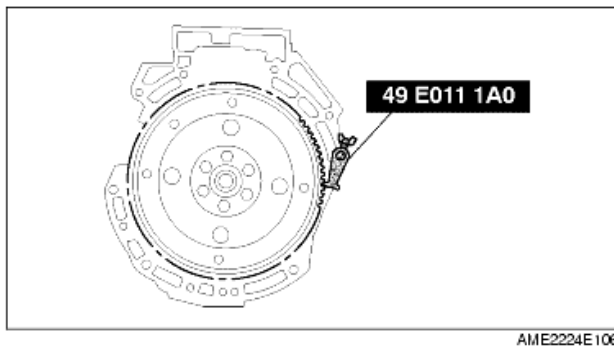
AME2224E337

1	Spark plug
2	Cylinder head cover
3	Crankshaft pulley lock bolt (See Crankshaft Pulley Lock Bolt Disassembly Note)
4	Crankshaft pulley
5	Water pump pulley
6	Drive belt idler pulley
7	Engine front cover
8	Front oil seal (See Front Oil Seal Disassembly Note)
9	Chain tensioner (See Chain Tensioner Disassembly Note)
10	Tensioner arm

11	Chain guide
12	Timing chain
13	Seal (L3 (with variable valve timing mechanism))
14	Oil pump chain tensioner
15	Oil pump chain guide
16	Oil pump sprocket (See Oil Pump Sprocket Disassembly Note)
17	Oil pump chain
18	Crankshaft sprocket

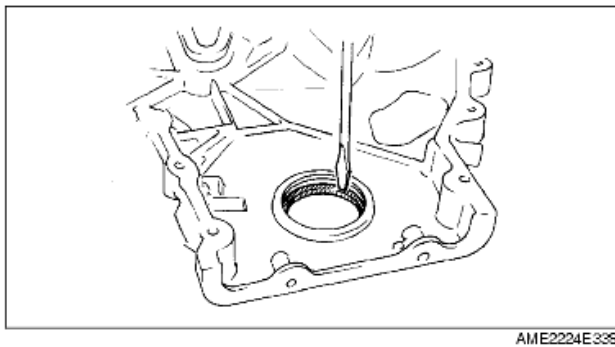
Crankshaft Pulley Lock Bolt Disassembly Note

1. Hold the crankshaft using the **SST**.
2. Remove the crankshaft pulley lock bolt.



Front Oil Seal Disassembly Note

1. Remove the oil seal using a screwdriver.



Chain Tensioner Disassembly Note

1. Hold the chain tensioner ratchet lock mechanism away from the ratchet stem with a thin screwdriver.
2. Slowly press the tensioner piston.
3. Hold the chain tensioner piston with a **1.5 mm {0.06 in}** wire or paper clip.

Oil Pump Sprocket Disassembly Note

1. Hold the oil pump sprocket using the **SST**.

